

WESTERN AUSTRALIA  
PILBARA: PORT HEDLAND

# BOODARIE STRATEGIC INDUSTRIAL AREA

A strategic industrial estate planned to support the growth of downstream processing for Western Australia's resource industries.

The Boodarie Strategic Industrial Area (SIA) is planned for strategic and downstream processing industries in Western Australia's Pilbara region.

The Boodarie SIA has been master planned to accommodate a range of mineral, gas processing and other strategic industries requiring access to the nearby Port Hedland port.

Boodarie is also connected to key regional road, gas, power and water infrastructure networks.

Proponents that have already chosen to invest in the Boodarie SIA include;

- › Alinta – power station.
- › Sub 161 – compressed natural gas.

Land is available in the Boodarie SIA for strategic and downstream processing industries and will be allocated by the Department of State Development through a lease arrangement with LandCorp.

For more information visit  
[landcorp.com.au/boodariesia](http://landcorp.com.au/boodariesia)



Government of **Western Australia**  
Department of **State Development**



**LANDCORP**



# SIA

STRATEGIC INDUSTRIAL AREAS  
**BOODARIE**  
WESTERN AUSTRALIA

## LOCATION

Located 10km south west of Port Hedland in Western Australia's Pilbara region.

## PROJECT AREA

Approximately 3,500ha.

## PLANNING

For strategic/heavy industry.

## TARGET INDUSTRIES

Downstream processing projects based on the local resources such as natural gas, iron ore, salt and other strategic industrial activity.

## CURRENT PROPONENTS

Alinta Power Station.

Sub 161 Compressed Natural Gas Facility.

## FEATURES/BENEFITS

- > Large scale sites available.
- > Connected to existing road, gas, power, water and deep water port.
- > Protected from sensitive land uses.
- > A secure investment environment.
- > Close to skilled workforce and townsite amenities.

## APPROVALS

Planning approvals in place.

## LAND TENURE

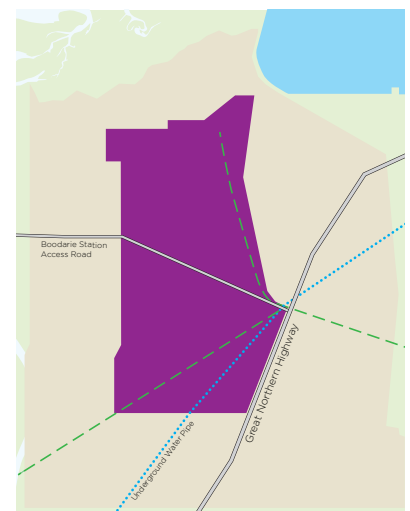
Lease from LandCorp.

## SERVICES

More detailed information on services can be provided on request.

## MORE INFORMATION

Visit [landcorp.com.au/boodariesia](http://landcorp.com.au/boodariesia)



## LEGEND

- Core
- Buffer
- Port
- Underground water pipeline
- Gas Pipeline

## WESTERN AUSTRALIAN LAND AUTHORITY

Level 6 Wesfarmers House, 40 The Esplanade Perth, Western Australia 6000

T +61 8 9482 7499 [landcorp.com.au](http://landcorp.com.au)